

Robiq* 400-10, Satin

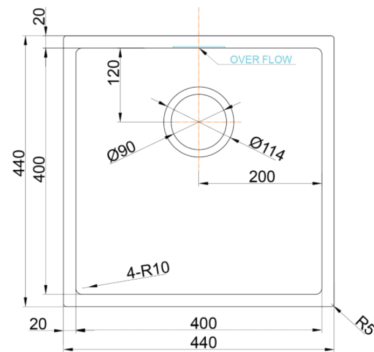


Code 20.9942.SA

Product Overview

Overall sink size:	440mm x 440mm	
Bowl dimension:	400mm x 400mm	
Bowl radius:	10mm	
Reversible:	No	
Cut out size:	400mm x 400mm	
Min cabinet size:	500mm	
Installation:	Flushmount, Overmount, Undermount, Welded	
Material:	Stainless Steel	
Material Grade:	18/10.304 Stainless Steel	

Installation measurements



Tap Match

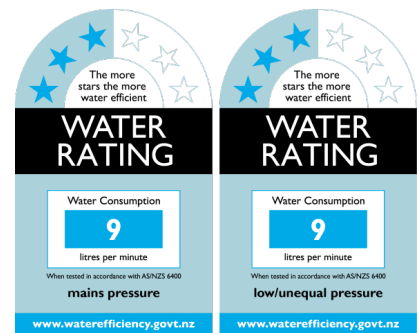
Cape



Production information

Code:	9202 CH
Tap Pressure:	All pressures
WELS rating:	3 Star
Warranty:	5 years
Tap swivel spout:	360°
Cartridge:	Ceramic-Disc Cartridge
Assembled:	New Zealand
Material:	Brass

WELS rating



Included accessories



Basketwaste &
Rect. Overflow Kit,
15 L/min Rating
(HCO)





Basket Waste
Strainer 15 L/min
Rating, Suits 5901
ZZ



HH Waste Cover
Badge for Robiq
Sinks (large)



Includes -
20.9857.ZZ
Archant Overflow
Badge -
20.9859.ZZ
Overflow T-Piece -
20.9852.ZZ L-
shape pipe -
20.8649.SA
Basketwaste w
Overflow Hole
-20.9856.SA
Strainer

Suggested accessories



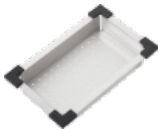
Chopping Board,
500mm



Robiq* Drainer
Tray, 395 x
425mm



Hot Mat, Stainless
Steel



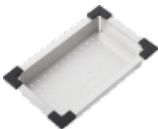
Colander,
Stainless Steel



Autosol 3in1 for
Stainless Steel
Cleaner 250ML



Hot Mat, Stainless
Steel



Colander,
Stainless Steel